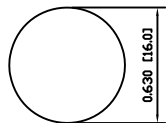
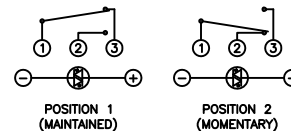


SUGGESTED PANEL CUTOUT



MAXIMUM PANEL THICKNESS: 0.551 [14.0mm]

SCHEMATIC



SPECIFICATIONS

FUNCTION:
1P2T ON-(ON)

RATING:
NOM-003-SCFI-2000 (200901C07839):
2A 48VDC [NOM]

ILLUMINATION VOLTAGE:
1.8V 20mA

CONTACT RESISTANCE:
Initial: 50mΩ Max. at 1A 12VDC

INSULATION RESISTANCE:
1,000MΩ Min. at 500VDC

DIELECTRIC STRENGTH:
2,000VAC Min. for 1 Minute

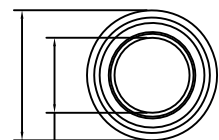
ELECTRICAL LIFE:
50,000 Cycles

MECHANICAL LIFE:
200,000 Cycles

TEMPERATURE:
Operating: -20°C to 55°C

INGRESS PROTECTION:
IP65

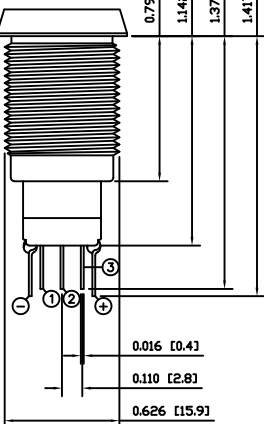
APPROVALS:
NOM **RoHS**
COMPLIANT



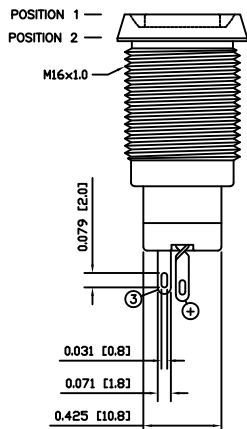
0.709 [18.0]
0.409 [10.4]

0.791±0.039 [20.1±1.0]
1.142±0.039 [29.0±1.0]
1.378±0.039 [35.0±1.0]
1.417±0.039 [36.0±1.0]

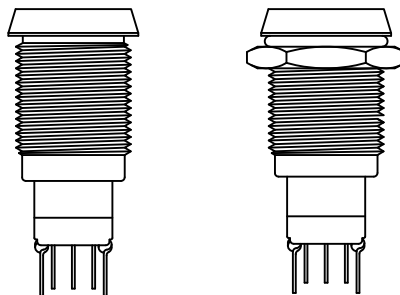
0.146 [3.7]



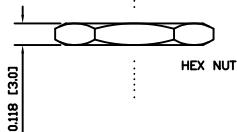
0.016 [0.4]
0.110 [2.8]
0.626 [15.9]



0.031 [0.8]
0.071 [1.8]
0.425 [10.8]

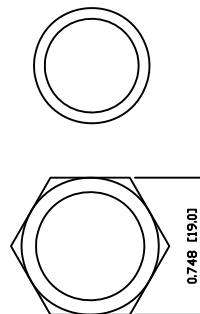


O-RING



HEX NUT

EXPLODED VIEW



ASSEMBLED VIEW

COLORS AND FINISH

BEZEL:
Black
Anodized Finish

ACTUATOR:
Red
Anodized Finish

ILLUMINATION:
Red (Forward)
Red (Reverse)

LENS:
Transparent Red

MARKING:
None

MATERIALS

BUSHING:
Aluminum (6063)

BASE:
Polybutylene Terephthalate (PBT)
Polycarbonate (PC)

ACTUATOR:
Aluminum (6063)
Polycarbonate (PC)

SEAL:
Silicone Rubber

HARDWARE:
Nickel Plated Brass (H59)

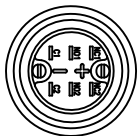
INNER ASSEMBLY:
Polyoxymethylene (POM)
Polycarbonate (PC)
Polybutylene Terephthalate (PBT)
Silver Plated Brass (H62)
Beryllium Copper

SPRING:
Stainless Steel (304)

CONTACTS:
Gold Plated Silver/Cadmium Oxide (AgCdO)

TERMINALS:
Silver Plated Brass (H62)

O-RING:
Silicone Rubber



BODY	A	10/10/20	CAB
COLORS	A	10/10/20	CAB
MATERIALS	A	10/09/23	CAB
SPECIFICATIONS	B	09/09/28	CAB
REFERENCE	REV.	DATE	BY

THE INFORMATION CONTAINED IN THIS DOCUMENT IS PROPRIETARY TO E-SWITCH AND IS NOT TO BE COPIED OR TRANSFERRED

A	INITIAL RELEASE	19382	10/10/20	CAB
REV.	DESCRIPTION	PCR	DATE	DRAWN BY

DIMENSIONS	INCHES [MILLIMETERS]
GENERAL TOLERANCES	±0.008 [±0.2] / ±1°
SCALE	DRAWING NOT TO SCALE

TITLE PV3WG2B019G-311	
ITEM NUMBER 52-PV3WG2B019G311	DATE OCTOBER 20, 2010
REVISION A	