

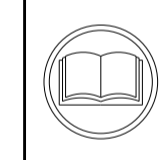
ATLANTIC VERSION TERMINATOR INTERFACE ADAPTER	PART NUMBER	REVISION	DESCRIPTION	FEED TYPE	APPLICATOR STYLE CONVERSION CHART						
					CONVERT TO	PART NUMBERS REQUIRED					
	2266189-2	A	FINE CRIMP HEIGHT ADJUST	PNEUMATIC	-	-	-	-	-	-	
	2266189-5	A	FINE CRIMP HEIGHT ADJUST	SERVO LATCH PLATE ⁴	SERVO LATCH PLATE	2119951-1	-	8-2266189-5	1901094-3	-	2168400-6 (QUANTITY 2)
					SMART APPLICATOR	2161326-1	-	8-2266189-4	-	-	
	2266189-6	A	NON-CRIMP HEIGHT ADJUST	SERVO LATCH PLATE ⁴	PNEUMATIC FEED	2119950-1	1338685-1	5-18022-5	2119641-1	2119799-1	2063440-2
					-	-	-	-	-	-	
	2266189-7	A	FINE CRIMP HEIGHT ADJUST	NONE	-	-	-	-	-	-	-
	7-2266189-7	A	CRIMP TOOLING KIT	-	-	-	-	-	-	-	-

APPLICATOR DATA		
CRIMP	SIZE	TYPE
WIRE	4.95 mm [.195]	F
INSUL	6.35 mm [.250]	F

APPLICATOR INSTRUCTIONS
408-10389

TERMINAL DATA: TRAMEC TERMINAL		TE CRIMP SPECIFICATION	
TERMINAL NAME: PLUG TERMINAL			
WIRE STRIP LENGTH		INSULATION DIAMETER RANGE	
5.40-5.78 mm [.213-.228 IN]		Ø 5.84 mm MAX [.230 IN MAX]	
TERMINAL APPLICATION SPECIFICATION	NONE		
TERMINALS APPLIED ¹⁰			
TE TERMINAL	TRAMEC TERMINAL	TE TERMINAL	TRAMEC TERMINAL
2113416-1	3819707		

WIRE SIZE	CRIMP HEIGHT mm [INCH]	CRIMP HEIGHT REFERENCE SETTING
8 AWG	3.35+/-0.05 [.132+/- .002]	2.7
10 AWG	2.86+/-0.05 [.113+/- .002]	8.0
12 AWG	2.57+/-0.05 [.101+/- .002]	10.9



- ¹ RECOMMENDED SPARE PARTS
- ² GREASE BEARING SURFACES LIGHTLY
- 3. LUBRICATE DAILY PER THE APPLICATOR INSTRUCTION SHEET SUPPLIED WITH THE APPLICATOR.
- ⁴ APPLICATOR SPECIFIC DATA TO BE ENTERED INTO BLANK MEMORY CHIP AT ASSEMBLY. SEE BELOW FOR PART NUMBER:
 PNEUMATIC FEED WITH "SMART APPLICATOR" CONVERSION: 8-2266189-4
 SERVO FEED WITH "FINE CRIMP HEIGHT ADJUST": 8-2266189-5
 SERVO FEED WITH "NON-CRIMP HEIGHT ADJUST": 8-2266189-6
- 5. ADJUSTMENT OF THE STRIPPER MAY BE REQUIRED WHEN MOVING THE APPLICATOR BETWEEN BENCH AND LEADMAKER APPLICATIONS.
- ⁶ APPLY PART NUMBER 1-23419-5 LOCTITE TO THREADS OF ITEMS 62 & 242. FOR -6 ONLY APPLY PART NUMBER 1-23419-5 LOCTITE TO THREADS OF ITEMS 37 & 242.
- ⁷ GREASE THREADS, GROOVE AND O-RING ON ITEMS 35 & 252.
- ⁸ MAGNET, ITEM 166 MUST BE ORIENTED CORRECTLY IN ORDER TO PROPERLY ACTUATE THE COUNTER.
- ⁹ CRIMP HEIGHT REFERENCE SETTING WAS THE SETTING USED WHEN THE APPLICATOR WAS QUALIFIED AT THE FACTORY. ADJUSTMENT MAY BE NECESSARY WHEN RUNNING APPLICATOR IN THE FIELD.
- ¹⁰ TERMINAL PITCH NOT COMPATIBLE WITH MECHANICAL FEED.
- ¹¹ TO CONVERT THE APPLICATOR TO A NON-CARRIER CUTTING STYLE, REMOVE ITEM 13 AND ATTACH TO THE LOCATION ON THE BACK SIDE OF THE HOUSING. REFER TO INSTRUCTION SHEET FOR ADDITIONAL INFORMATION.
- ¹² WHEN ASSEMBLING A NON CRIMP HEIGHT ADJUST APPLICATOR (-6) USE SHIMS FROM ITEM 260 TO ACHIEVE A NOMINAL SHIM HEIGHT OF 2.45.
- ¹³ CUT TO LENGTH AT ASSEMBLY
- ¹⁴ REFER TO PRESS MANUAL TO CONFIRM IF WIRE SIZES ARE COMPATIBLE.

***WARNING**
 ON INSTALLATION, SET WIRE DISC, ITEM 40 TO LARGEST WIRE SIZE SETTING. USE OF SETTINGS BELOW MINIMUM REQUIRED CRIMP HEIGHT SETTING WILL CAUSE DAMAGE TO CRIMP TOOLING.

-	2	2	2	2	2168083-1	SCR, SKT HD CAP, RoHS, M3 X 8.0	269
-	1	1	1	1	1633782-8	FENCE	267
-	-	1	-	-	2119957-2	APPLICATOR SHIM PACK	260
-	1	1	1	1	1803078-1	SPACER, PRECISION	259
-	1	-	1	1	8-21084-0	O-RING, .676 ID, .070 DIA. MAT.	252
-	-	-	-	1	2119640-1	PUSH ROD, AIR FEED	250
-	-	-	-	1	2079988-1	BUSHING, LCH5-12, MISUMI	249
-	-	-	-	1	2119641-1	FEED CAM, AIR FEED	248
-	1	-	1	1	2119798-1	DETENT PIN	247
-	1	-	1	1	1-22279-3	SPRING, COMPRESSION	246
-	-	1	-	-	2161314-1	RAM, STEPPED, ATLANTIC, SF, NON-ADJ	245
-	1	1	1	1	2119082-9	CAM, SNAIL, INSULATION ADJUSTMENT	244
-	1	1	1	1	2079764-1	WASHER, WAVE SPRING, CREST-TO-CREST	243
-	1	1	1	1	2119083-1	RETAINER, INSULATION DIAL	242
-	1	1	1	1	7-18023-7	SCR, SKT HD CAP M3 X 4.0	241
-	-	2	2	-	2168400-6	SHCS, LOW HEAD, RoHS, M5 X 16	240
-	-	-	-	1	2063440-2	AIR FEED MODULE	238
-	1	1	1	1	2119091-3	SHIM, LAMINATE	221
-	-	1	1	-	2119740-2	TAG, IDENTIFICATION	213
-77	-7	-6	-5	-2	PART NO	DESCRIPTION	ITEM NO

ATLANTIC VERSION
 Shown on sheets 1 of 4 & 2 of 4
 (Pacific version shown on sheets 3 of 4 & 4 of 4)

SET UP GAUGE	LOC	DIST	REVISIONS				
2119599-1	A	66	P LTR	DESCRIPTION	DATE	OWN	APVD
			A	RELEASED	14FEB2014	LG	TE

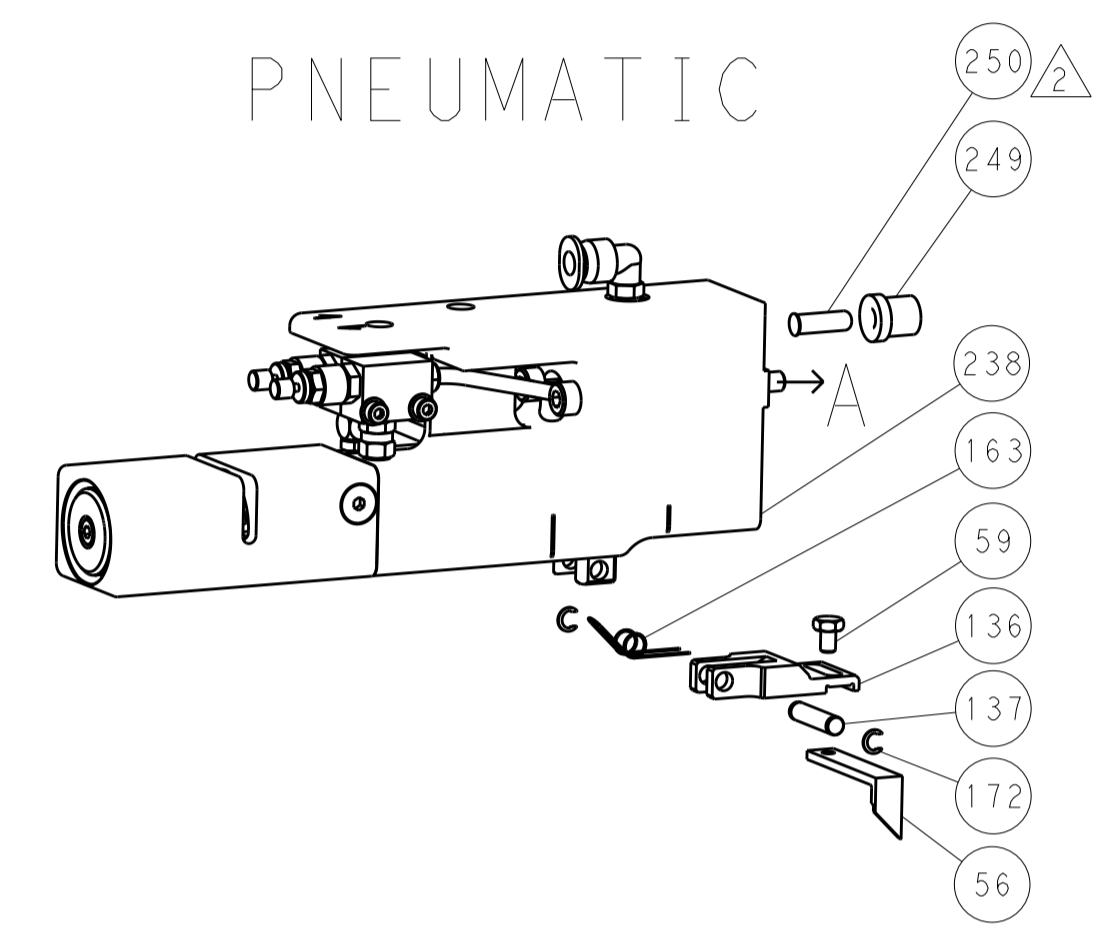
-	-	1	1	-	1901094-3	SPACER, FEEDER	198
-	1	1	1	1	2-1333296-2	CRIMPER, WIRE LOOSE PIECE	178
-	-	-	-	2	21045-3	RING, RETAIN, EXTERN, 3/16 CRESCENT	172
-	1	1	1	1	994969-1	MAGNET, RARE EARTH HIGH ENERGY	166
-	REF	REF	REF	REF	994970-2	COUNTER, MAGNETIC	164
-	-	-	-	1	240638-1	SPRING, FEED FINGER	163
-	-	-	-	1	3-23627-7	PIN, RETAIN, GRVD, 3/16 X .854	137
-	-	-	-	1	2119799-1	HOLDER, FEED FINGER, AF	136
-	-	REF	REF	-	SEE NOTE 4	MEMORY CHIP, PROGRAMMED	135
-	-	1	1	-	1633743-1	SERVO FEED LATCH ASM	133
-	1	1	1	1	1-455888-2	SPACER, CRIMPER	120
-	1	1	1	1	1-18028-2	WASHER, FLAT, REG M4	119
-	-	REF	REF	-	2119944-1	FEED FINGER ASSEMBLY, SF	117
-	1	1	1	1	1-690438-0	FRONT STRIP GUIDE	96
-	2	2	2	2	2168083-1	SCR, SKT HD CAP, RoHS, M3 X 8.0	95
-	1	1	1	1	455888-6	SPACER, CRIMPER	82
-	2	2	2	2	2079383-4	SCR, BHSC, RoHS (M4 X 8)	79
-	1	1	1	1	1803096-1	EXTENSION PLATE	78
-	1	1	1	1	22278-9	SPRING, COMPRESSION	77
-	1	1	1	1	854769-4	HOLDER, INS	74
-	1	1	1	1	2119956-1	DOCUMENTATION PACKAGE	71
-	1	1	1	1	1-2119791-2	DEPRESSOR, WIRE	70
-	1	1	1	1	2119943-1	WASHER, SPACER	69
-	1	-	-	1	2119740-1	TAG, IDENTIFICATION	67
-	2	2	2	2	2168078-1	SCREW, DRIVE, RH, RoHS, 2 x .188	66
-	1	-	1	1	2119793-1	LIMITER, ADJUSTMENT BOLT	63
-	3	-	3	3	992763-5	SCR, SET, SOC, CONE POINT, M3 x 4.0	62
-	2	2	2	2	2-18032-5	SCR, SET, FLT POINT M5 X 20.0	61
-	1	1	1	1	2079383-4	SCR, BHSC, RoHS (M4 X 8)	60
-	-	-	-	1	5-18022-5	SCR, HEX HD CAP, M4 X 6.0	59
-	1	1	1	1	21028-2	PIN, SLOTTED SPRING .062 X .250	58
-	-	-	-	1	1338683-8	FEED PAWL	56
-	4	4	4	4	2168400-1	SHCS, LOW HEAD, RoHS, M4 X 12	54
-	2	2	2	2	1-2079383-3	SCR, BHSC, RoHS (M4 X 25)	53
-	1	1	1	1	5018030-1	NUT, HEX, REG, RoHS, M3	52
-	1	1	1	1	1-811242-0	BUMPER, HOLD DOWN	51
-	1	1	1	1	690753-2	SPACER, TONKER	50
-	-	-	-	1	18023-9	SCR, SKT HD CAP M4 X 6.0	49
-	1	1	1	1	2-2119656-3	APPLICATOR BASIC ASSEMBLY, SF	46
-	1	-	1	1	2161311-1	RAM, STEPPED, AMP STYLE, SIDE FEED	44
-	1	1	1	1	1-2079383-5	SCR, BHSC, RoHS (M8 X 40)	41
-	1	-	1	1	2119645-1	DISC, NUMBERED FA WIRE ADJUSTMENT	40
-	1	-	1	1	2119957-1	APPLICATOR SHIM PACK	39
-	1	1	1	1	2119644-4	RAM WASHER, PRECISION	38
-	1	1	1	1	2119085-1	FA HEAD, ATLANTIC STYLE	37
-	1	-	1	1	2119092-1	BOLT, ADJUSTMENT	35
-	1	1	1	1	1752356-1	SUPPORT, TERMINAL	34
-	2	2	2	2	2079383-5	SCR, BHSC, RoHS (M4 X 20)	33
-	1	1	1	1	2161328-1	HEX HEAD, FLANGED, M5 x 8mm LONG	32
-	1	1	1	1	1320908-6	SPACER, STRIP GUIDE	30
-	1	1	1	1	2119959-3	ASSEMBLY, STRIP GUIDE	29
-	1	1	1	1	455888-3	SPACER, CRIMPER	28
-	2	2	2	2	22283-1	SPRING, COMPRESSION	27
-	1	1	1	1	356835-1	LEVER, DRAG RELEASE	26
-	1	1	1	1	240792-1	DRAG, TERMINAL	25
-	1	1	1	1	1320928-6	STRIP GUIDE	24
-	1	1	1	1	980371-4	SCR, SKT HD SHLDR 5.0 DIA X 6.0	23
-	1	1	1	1	2168083-2	SCR, SKT HD CAP, RoHS, M4 X 8.0	21
-	1	1	1	1	1-18028-2	WASHER, FLAT, REG M4	20
-	1	1	1	1	2119533-3	STRIPPER, SIDE FEED	19
-	1	1	1	1	2119806-1	INSERT, SHEAR	13
-	1	1	1	1	3-22280-3	SPRING, COMPRESSION	12
-	1	1	1	1	1-356885-4	STOP, SHEAR	11
-	1	1	1	1	2119805-1	SHEAR HOLDER, FRONT	10
-	1	1	1	1	454276-5	FLOATING SHEAR, FRONT	9
1	1	1	1	1	2-1803057-0	ANVIL, COMBINATION	8
-	1	1	1	1	8-240641-3	SPACER	7
-	-	-	-	-	-	-	6
-	1	1	1	1	1-2119780-4	DEPRESSOR, SHEAR	5
-	1	1	1	1	1-238011-4	BLOCK, CRIMPER SPACER	4
1	1	1	1	1	5-1633962-0	CRIMPER, INSULATION F PREMIUM	3
-	1	1	1	1	455888-1	SPACER, CRIMPER	2
1	1	1	1	1	5-1633730-1	CRIMPER, WIRE	1
-77	-7	-6	-5	-2	PART NO	DESCRIPTION	ITEM NO

DIMENSIONS:		TOLERANCES UNLESS OTHERWISE SPECIFIED:		DATE	REV	DESCRIPTION	DATE	REV
mm	0 PLC ±.05	1 PLC ±.03	2 PLC ±.02	15JAN2014	1	TE Connectivity	15JAN2014	1
	3 PLC ±.013	4 PLC ±.01	ANGLES ±.0001	15JAN2014	1	Ocean Side Feed	15JAN2014	1
						Applicator		
MATERIAL	FINISH	WEIGHT	SCALE	Customer Accessible Production Drawing		SCALE 1:2 SHEET 1 OF 4 REV A		

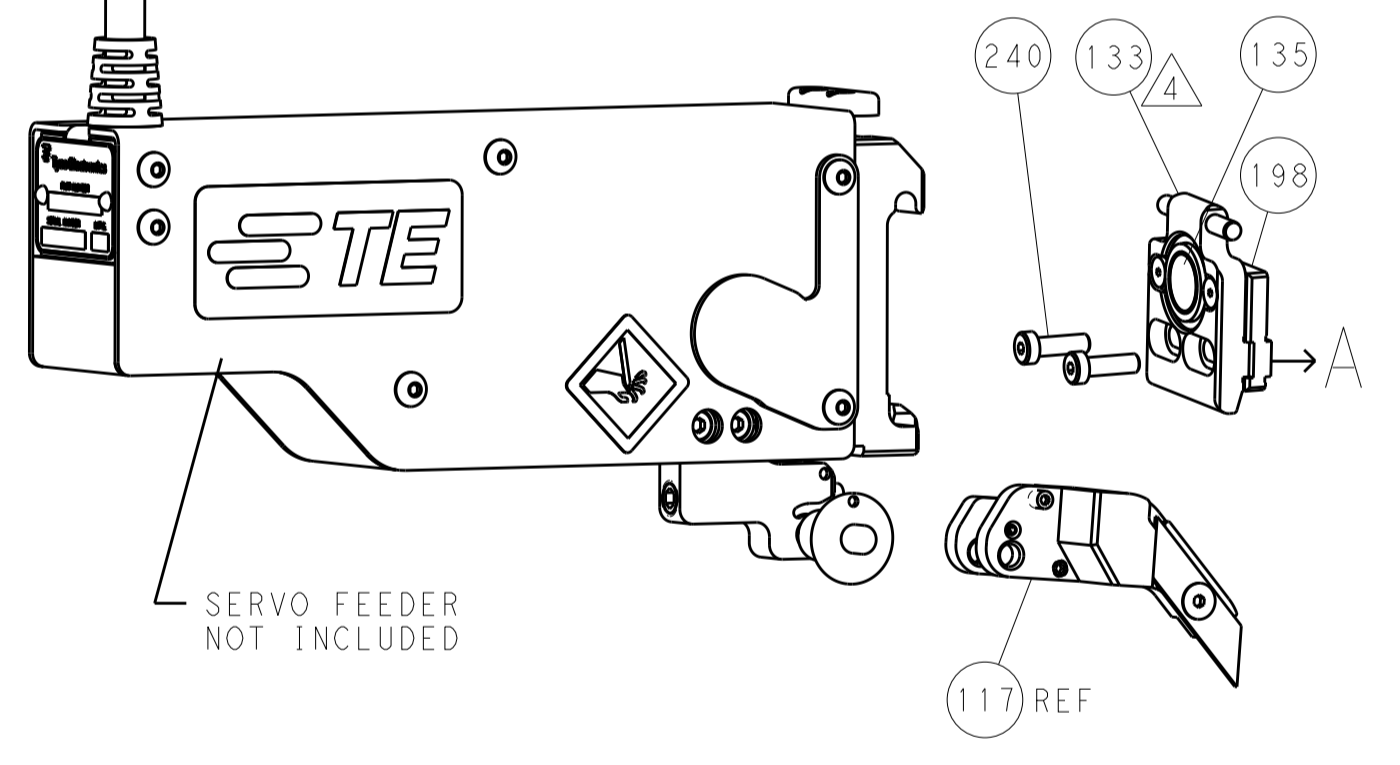
LOC		DIST		REVISIONS			
A	66	P	LTM	DESCRIPTION	DATE	DWN	APVD
		-	-	SEE SHEET 1	-	-	-

FEED TYPE

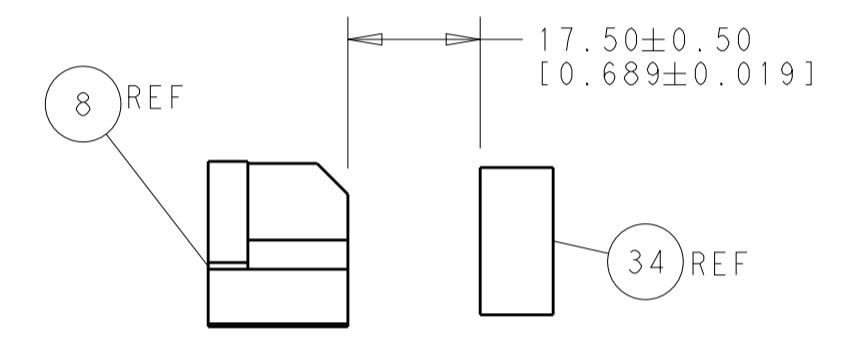
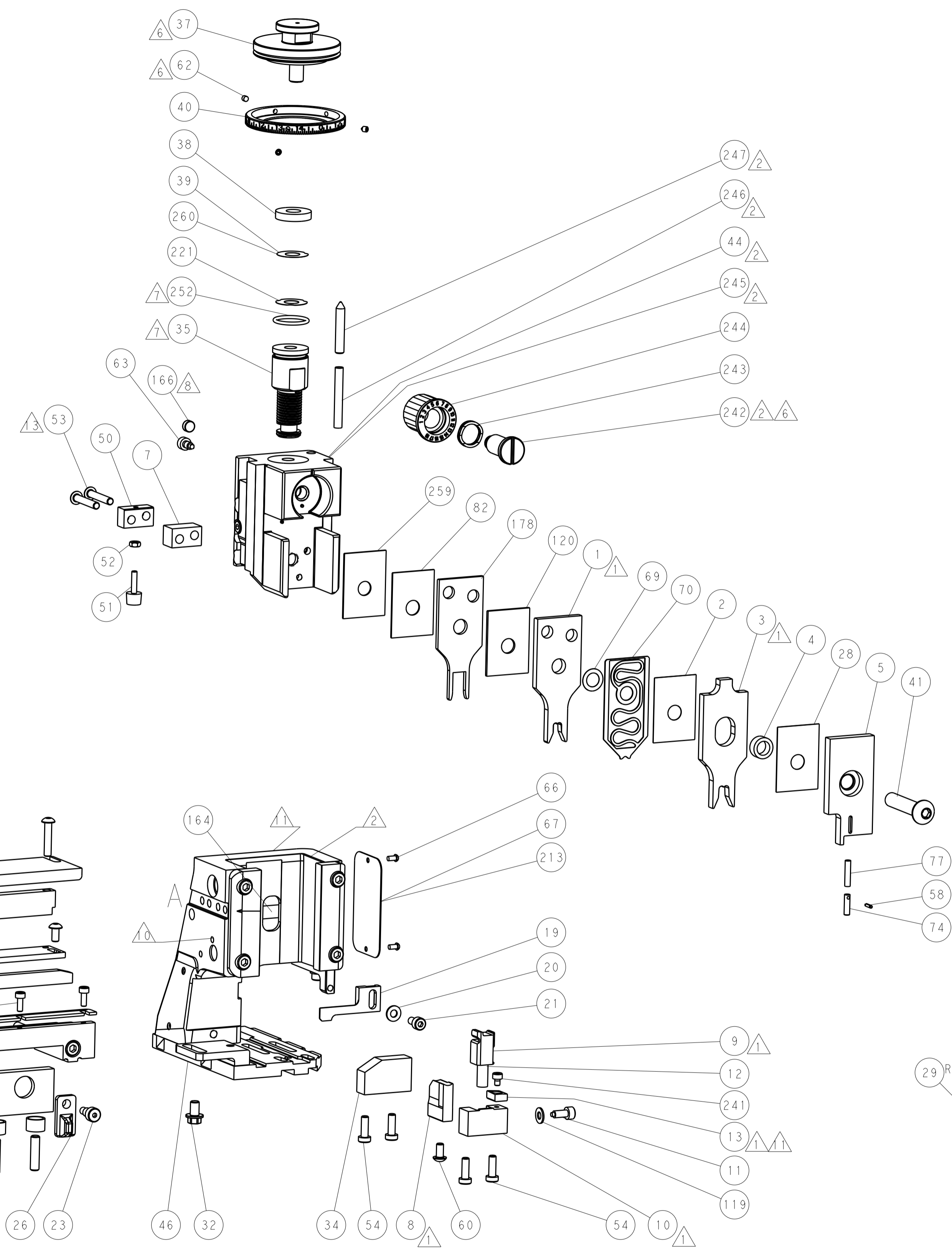
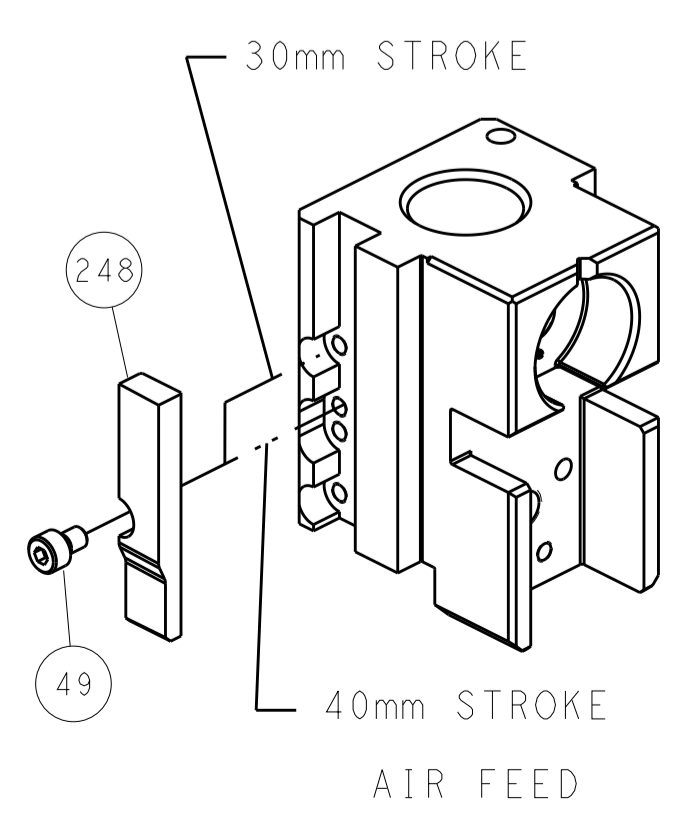
PNEUMATIC



SERVO LATCH PLATE

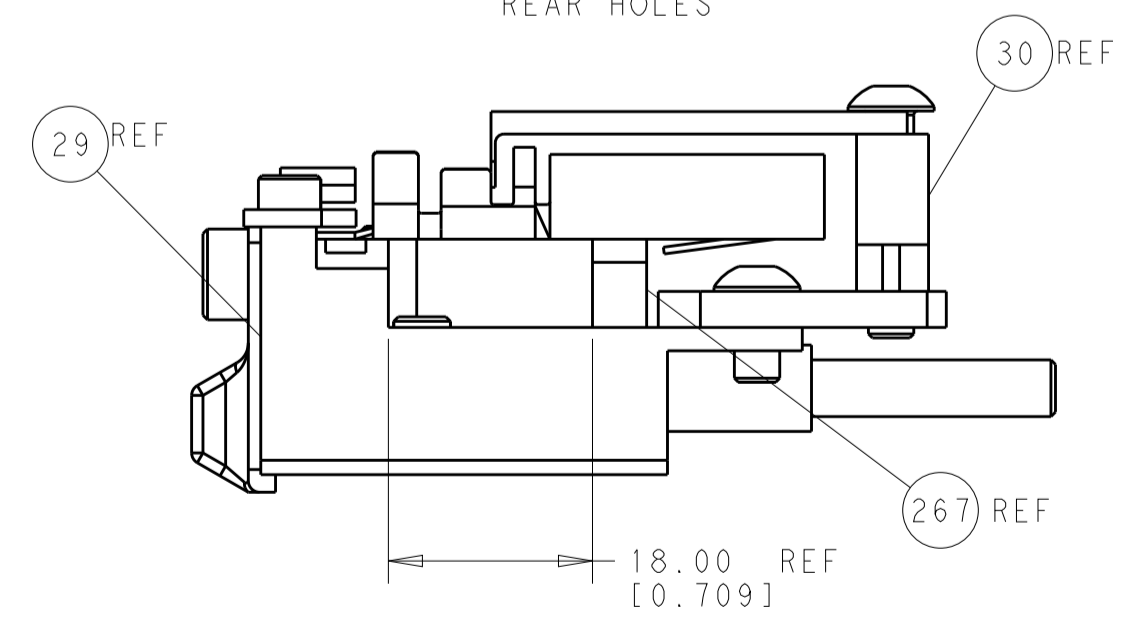


CAM POSITION



TERMINAL SUPPORT LOCATION

ITEM 30 LOCATED AT REAR HOLES



FEED TRACK POSITION GUIDE BY WIRE BARREL

ATLANTIC VERSION
 Shown on sheets 1 of 4 & 2 of 4
 (Pacific version shown on sheets 3 of 4 & 4 of 4)

DIMENSIONS:		TOLERANCES UNLESS OTHERWISE SPECIFIED:		DWN		TE Connectivity	
mm	0 PLC ±0.5	1 PLC ±0.5	2 PLC ±0.13	3 PLC ±0.013	15JAN2014	TE Connectivity Harrisburg, PA 17105-3608	
	4 PLC ±0.0001	ANGLES ±0.0001		APVD	15JAN2014	NAME	
MATERIAL	FINISH	WEIGHT	SCALE	Customer Accessible Production Drawing	00779	C=2266189	RESTRICTED TO
			1:2				

PACIFIC VERSION TERMINATOR INTERFACE ADAPTER	PART NUMBER	REVISION	DESCRIPTION	FEED TYPE
	2-2266189-2	A	FINE CRIMP HEIGHT ADJUST	PNEUMATIC
	2-2266189-5	A	FINE CRIMP HEIGHT ADJUST	SERVO LATCH PLATE ⁴
	2-2266189-7	A	FINE CRIMP HEIGHT ADJUST	NONE
	7-2266189-7	A	CRIMP TOOLING KIT	-

APPLICATOR DATA		
CRIMP WIRE	SIZE	TYPE
	4.95 mm [.195]	F
INSUL	6.35 mm [.250]	F
APPLICATOR INSTRUCTIONS 408-10389		

TERMINAL DATA: TRAMEC TERMINAL TE CRIMP SPECIFICATION	
TERMINAL NAME: PLUG TERMINAL	
WIRE STRIP LENGTH 5.40-5.78 mm [.213-.228 IN]	INSULATION DIAMETER RANGE Ø 5.84 mm MAX [.230 IN MAX]
TERMINAL APPLICATION SPECIFICATION NONE	
TERMINALS APPLIED ¹⁰	
TE TERMINAL 2113416-1	TRAMEC TERMINAL 3819707

WIRE SIZE	CRIMP HEIGHT mm [INCH]	CRIMP HEIGHT REFERENCE SETTING ⁹
8 AWG	3.35 +/- 0.05 [.132 +/- .002]	2.7
10 AWG	2.86 +/- 0.05 [.113 +/- .002]	8.0
12 AWG	2.57 +/- 0.05 [.101 +/- .002]	10.9



- ¹ RECOMMENDED SPARE PARTS
- ² GREASE BEARING SURFACES LIGHTLY
- 3. LUBRICATE DAILY PER THE APPLICATOR INSTRUCTION SHEET SUPPLIED WITH THE APPLICATOR.
- ⁴ APPLICATOR SPECIFIC DATA TO BE ENTERED INTO BLANK MEMORY CHIP AT ASSEMBLY. SEE BELOW FOR PART NUMBER:
PNEUMATIC FEED WITH "SMART APPLICATOR" CONVERSION: 8-2266189-4
SERVO FEED WITH "FINE CRIMP HEIGHT ADJUST": 8-2266189-5
- 5. ADJUSTMENT OF THE STRIPPER MAY BE REQUIRED WHEN MOVING THE APPLICATOR BETWEEN BENCH AND LEADMAKER APPLICATIONS.
- ⁶ APPLY PART NUMBER 1-23419-5 LOCTITE TO THREADS OF ITEMS 62 & 242.
- ⁷ GREASE THREADS, GROOVE AND O-RING ON ITEMS 139 & 152.
- ⁸ MAGNET MUST BE ORIENTED CORRECTLY IN ORDER TO PROPERLY ACTUATE THE COUNTER.
- ⁹ CRIMP HEIGHT REFERENCE SETTING WAS THE SETTING USED WHEN THE APPLICATOR WAS QUALIFIED AT THE FACTORY. ADJUSTMENT MAY BE NECESSARY WHEN RUNNING APPLICATOR IN THE FIELD.
- ¹⁰ TERMINAL PITCH NOT COMPATIBLE WITH MECHANICAL FEED.
- ¹¹ TO CONVERT THE APPLICATOR TO A NON-CARRIER CUTTING STYLE, REMOVE ITEM 13 AND ATTACH TO THE LOCATION ON BACK SIDE OF THE HOUSING. REFER TO INSTRUCTION SHEET FOR ADDITIONAL INFORMATION.
- ¹² CUT TO LENGTH AT ASSEMBLY
- ¹³ REFER TO PRESS MANUAL TO CONFIRM IF WIRE SIZES ARE COMPATIBLE.

APPLICATOR STYLE CONVERSION CHART						
CONVERT TO	PART NUMBERS REQUIRED					
SERVO LATCH PLATE	2119951-1	-	8-2266189-5	1901094-3	-	2168400-6 (QUANTITY 2)
SMART APPLICATOR	2161326-1	-	8-2266189-4	-	-	-
PNEUMATIC FEED	2119950-1	1338685-1	5-18022-5	2119641-2	2119799-1	2063440-2

***WARNING**
ON INSTALLATION, SET WIRE DISC, ITEM 40 TO LARGEST WIRE SIZE SETTING. USE OF SETTINGS BELOW MINIMUM REQUIRED CRIMP HEIGHT SETTING WILL CAUSE DAMAGE TO CRIMP TOOLING.

- 2 2 2	2168083-1	SCR, SKT HD CAP, RoHS, M3 X 8.0	269
- 1 1 1	1633782-8	FENCE	267
- 1 1 1	1803078-1	SPACER, PRECISION	259
- 1 1 1	2119782-1	FINE ADJUST HEAD ASM, PACIFIC STYLE	251
- - - 1	2119640-1	PUSH ROD, AIR FEED	250
- - - 1	2079988-1	BUSHING, LCH5-12, MISUMI	249
- 1 1 1	1-22279-3	SPRING, COMPRESSION	246
- 1 1 1	2119082-9	CAM, SNAIL, INSULATION ADJUSTMENT	244
- 1 1 1	2079764-1	WASHER, WAVE SPRING, CREST-TO-CREST	243
- 1 1 1	2119083-1	RETAINER, INSULATION DIAL	242
- 1 1 1	7-18023-7	SCR, SKT HD CAP M3 X 4.0	241
- - 2 -	2168400-6	SHCS, LOW HEAD, RoHS, M5 X 16	240
- - - 1	2063440-2	AIR FEED MODULE	238
- 1 1 1	2119091-3	SHIM, LAMINATE	221
- - 1 -	2119740-2	TAG, IDENTIFICATION	213
- - 1 -	1901094-3	SPACER, FEEDER	198
- 1 1 1	2-1333296-2	CRIMPER, WIRE LOOSE PIECE	178
-77 -27 -25 -22	PART NO	DESCRIPTION	ITEM NO

PACIFIC VERSION
Shown on sheets 3 of 4 & 4 of 4
(Atlantic version shown on sheets 1 of 4 & 2 of 4)

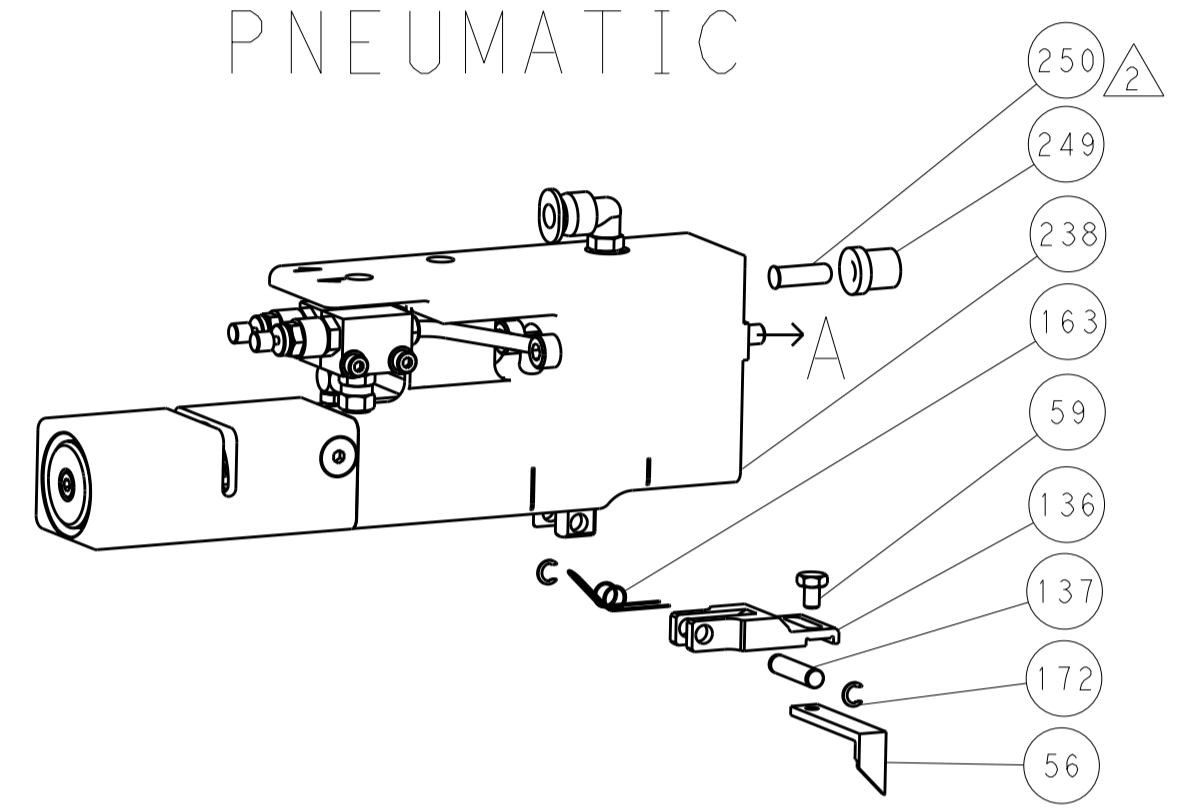
SET UP GAUGE	LOC	DIST	REVISIONS			
2119599-1	A	66	REV	DATE	BY	APPV
			-	SEE SHEET 1	-	-

- - - 2	21045-3	RING, RETAIN, EXTERN, 3/16 CRESCENT	172
- 1 1 1	994969-1	MAGNET, RARE EARTH HIGH ENERGY	166
- REF REF REF	994970-2	COUNTER, MAGNETIC	164
- - - 1	240638-1	SPRING, FEED FINGER	163
- 1 1 1	8-21084-1	O-RING, .801 ID, .070 DIA. MAT.	152
- - - 1	2119641-2	FEED CAM, AIR FEED	151
- 1 1 1	2119798-2	DETENT PIN	145
- 1 1 1	2079383-8	SCR, BHSC, RoHS (M4 X 16)	144
- 4 4 4	2168400-5	SHCS, LOW HEAD, RoHS, M4 X 20	143
- 1 1 1	2-2119656-4	APPLICATOR BASIC ASSEMBLY, SF	141
- 1 1 1	2161312-1	RAM, STEPPED, ASIAN STYLE, SIDE FEED	140
- 1 1 1	2119092-2	BOLT, ADJUSTMENT	139
- - - 1	3-23627-7	PIN, RETAIN, GRVD, 3/16 X .854	137
- - - 1	2119799-1	HOLDER, FEED FINGER, AF	136
- - REF -	SEE NOTE 4	MEMORY CHIP, PROGRAMMED	135
- - 1 -	1633743-1	SERVO FEED LATCH ASM	133
- 1 1 1	1-455888-2	SPACER, CRIMPER	120
- 1 1 1	1-18028-2	WASHER, FLAT, REG M4	119
- - REF -	2119944-1	FEED FINGER ASSEMBLY, SF	117
- 1 1 1	1-690438-0	FRONT STRIP GUIDE	96
- 2 2 2	2168083-1	SCR, SKT HD CAP, RoHS, M3 X 8.0	95
- 1 1 1	455888-6	SPACER, CRIMPER	82
- 2 2 2	2079383-4	SCR, BHSC, RoHS (M4 X 8)	79
- 1 1 1	1803096-1	EXTENSION PLATE	78
- 1 1 1	22278-9	SPRING, COMPRESSION	77
- 1 1 1	854769-4	HOLDER, INS	74
- 1 1 1	2119956-1	DOCUMENTATION PACKAGE	71
- 1 1 1	1-2119791-2	DEPRESSOR, WIRE	70
- 1 1 1	2119943-1	WASHER, SPACER	69
- 1 - 1	2119740-1	TAG, IDENTIFICATION	67
- 2 2 2	2168078-1	SCREW, DRIVE, RH, RoHS, 2 x .188	66
- 1 1 1	2119793-1	LIMITER, ADJUSTMENT BOLT	63
- 3 3 3	992763-5	SCR, SET, SOC, CONE POINT, M3 X 4.0	62
- 2 2 2	2-18032-5	SCR, SET, FLT POINT M5 X 20.0	61
- - - 1	5-18022-5	SCR, HEX HD CAP, M4 X 6.0	59
- 1 1 1	21028-2	PIN, SLOTTED SPRING .062 X .250	58
- - - 1	1338683-8	FEED PAWL	56
- 2 2 2	1-2079383-3	SCR, BHSC, RoHS (M4 X 25)	53
- 1 1 1	5018030-1	NUT, HEX, REG, RoHS, M3	52
- 1 1 1	1-811242-0	BUMPER, HOLD DOWN	51
- 1 1 1	690753-2	SPACER, TONKER	50
- - - 1	18023-9	SCR, SKT HD CAP M4 X 6.0	49
- 1 1 1	1-2079383-5	SCR, BHSC, RoHS (M8 X 40)	41
- 1 1 1	2119645-1	DISC, NUMBERED FA WIRE ADJUSTMENT	40
- 1 1 1	2119957-1	APPLICATOR SHIM PACK	39
- 1 1 1	2119644-4	RAM WASHER, PRECISION	38
- 1 1 1	1752356-1	SUPPORT, TERMINAL	34
- 2 2 2	2079383-5	SCR, BHSC, RoHS (M4 X 20)	33
- 1 1 1	2161328-1	HEX HEAD, FLANGED, M5 X 8mm LONG	32
- 1 1 1	1320908-6	SPACER, STRIP GUIDE	30
- 1 1 1	2119959-3	ASSEMBLY, STRIP GUIDE	29
- 1 1 1	455888-3	SPACER, CRIMPER	28
- 2 2 2	22283-1	SPRING, COMPRESSION	27
- 1 1 1	356835-1	LEVER, DRAG RELEASE	26
- 1 1 1	240792-1	DRAG, TERMINAL	25
- 1 1 1	1320928-6	STRIP GUIDE	24
- 1 1 1	980371-4	SCR, SKT HD SHLDR 5.0 DIA X 6.0	23
- 1 1 1	2168083-2	SCR, SKT HD CAP, RoHS, M4 X 8.0	21
- 1 1 1	1-18028-2	WASHER, FLAT, REG M4	20
- 1 1 1	2119533-3	STRIPPER, SIDE FEED	19
- 1 1 1	2119806-1	INSERT, SHEAR	13
- 1 1 1	3-22280-3	SPRING, COMPRESSION	12
- 1 1 1	1-356885-4	STOP, SHEAR	11
- 1 1 1	2119805-1	SHEAR HOLDER, FRONT	10
- 1 1 1	454276-5	FLOATING SHEAR, FRONT	9
1 1 1 1	2-1803057-0	ANVIL, COMBINATION	8
- 1 1 1	8-240641-3	SPACER	7
- - - -	-	-	6
- 1 1 1	1-2119780-4	DEPRESSOR, SHEAR	5
- 1 1 1	1-238011-4	BLOCK, CRIMPER SPACER	4
1 1 1 1	5-1633962-0	CRIMPER, INSULATION F PREMIUM	3
- 1 1 1	455888-1	SPACER, CRIMPER	2
1 1 1 1	5-1633730-1	CRIMPER, WIRE	1
-77 -27 -25 -22	PART NO	DESCRIPTION	ITEM NO

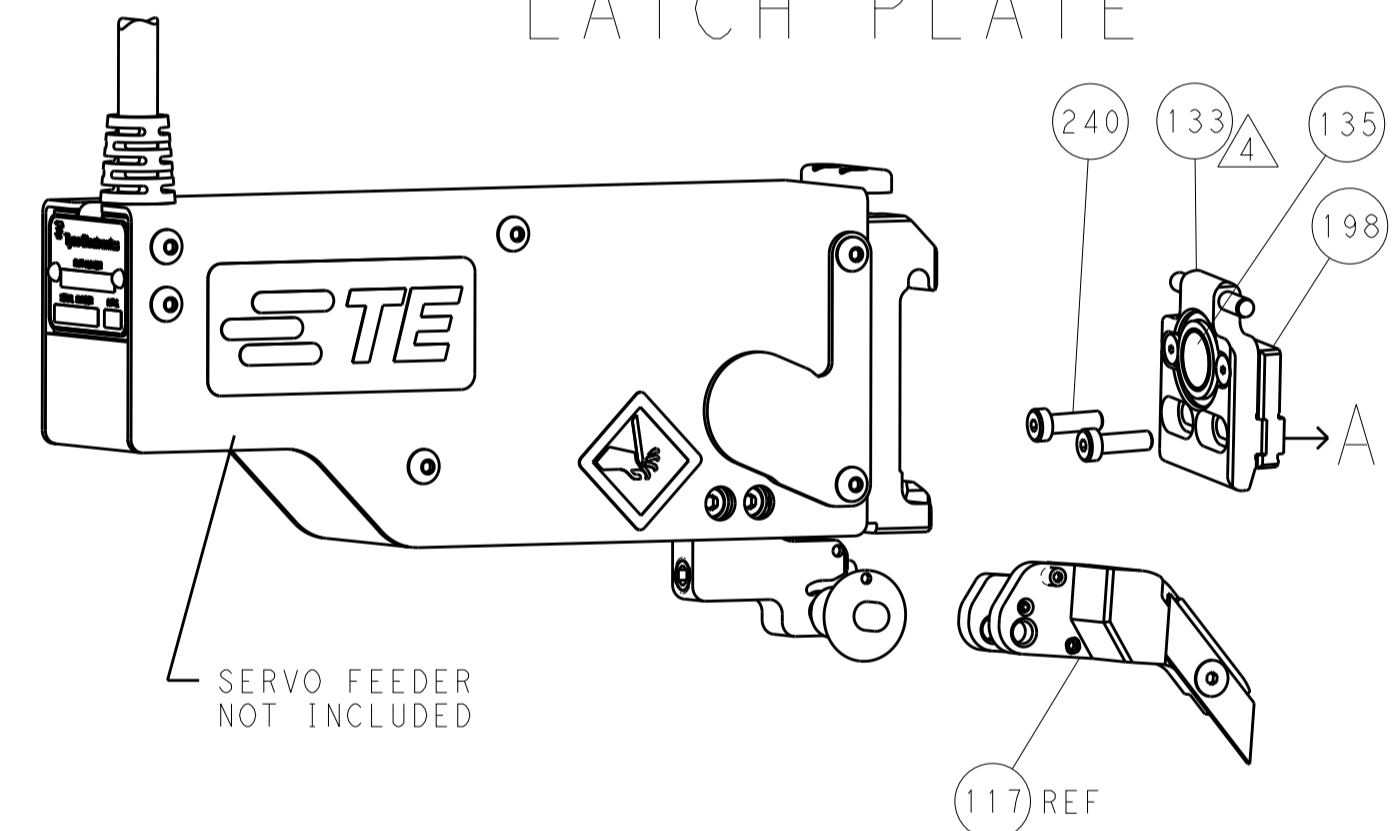
DIMENSIONS:		TOLERANCES UNLESS OTHERWISE SPECIFIED:		DATE	
mm	0 PLC ±.5	1 PLC ±.5	2 PLC ±.5	3 PLC ±.5	4 PLC ±.5
	ANGLES ±.0001				
MATERIAL	FINISH	WEIGHT	SCALE	SHEET	REV
			1:2	3 OF 4	A

LOC		DIST		REVISIONS			
A	66	P	LTM	DESCRIPTION	DATE	DWN	APVD
		-		SEE SHEET 1			

FEED TYPE PNEUMATIC



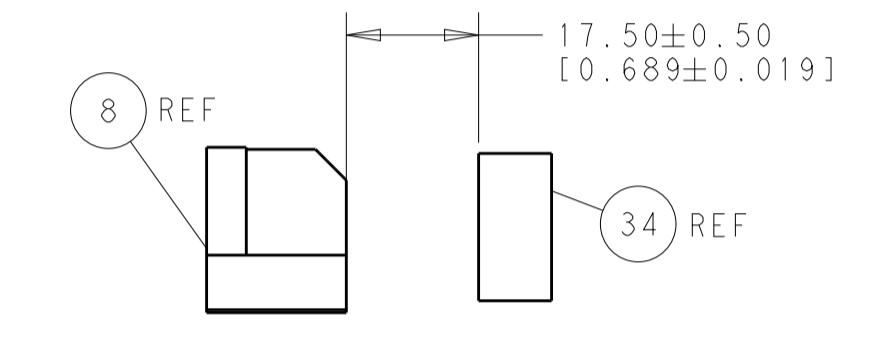
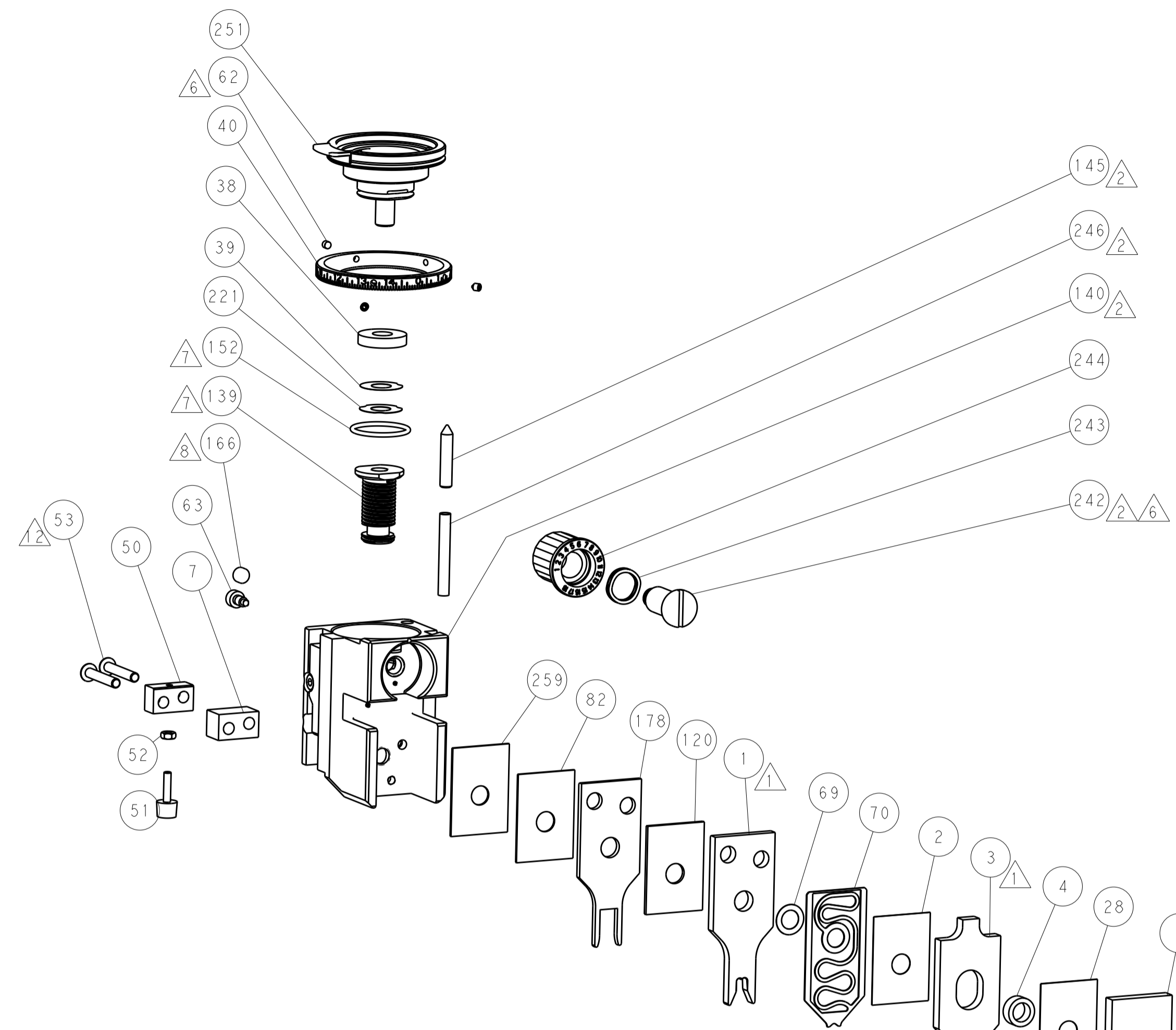
SERVO LATCH PLATE



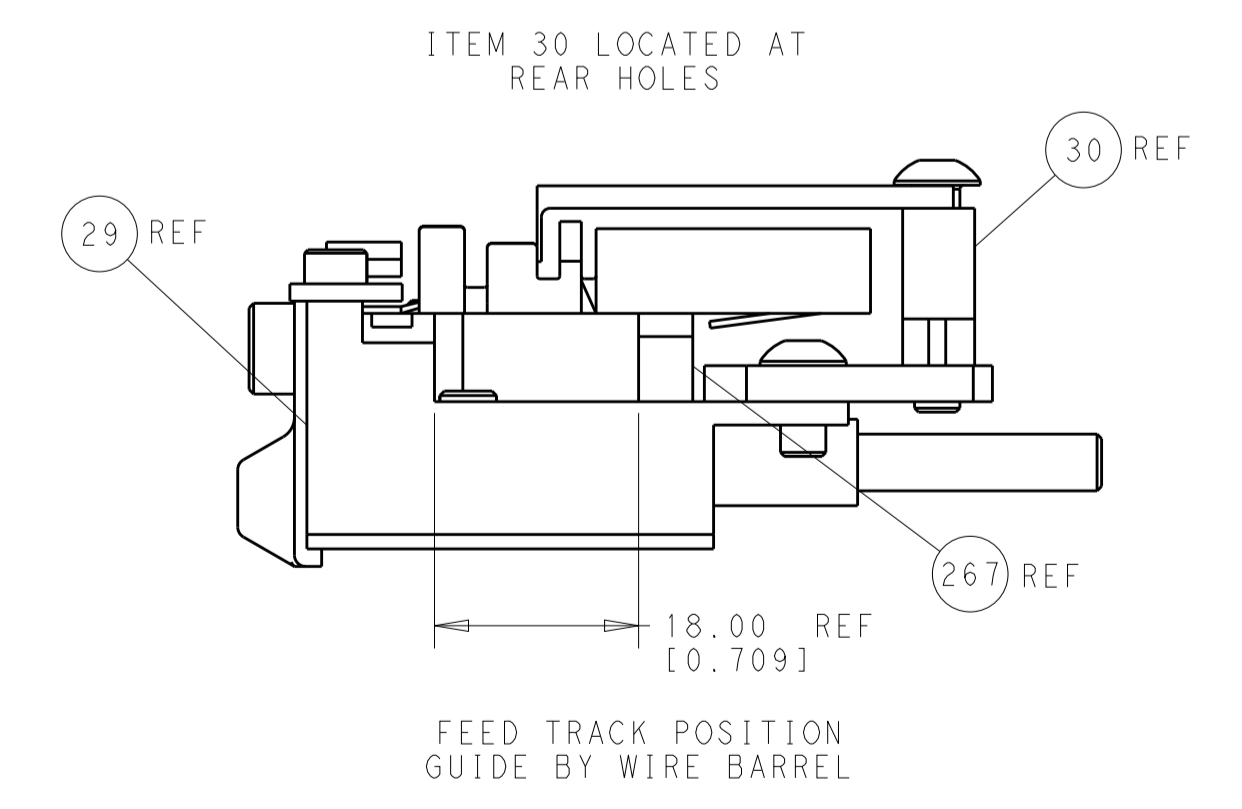
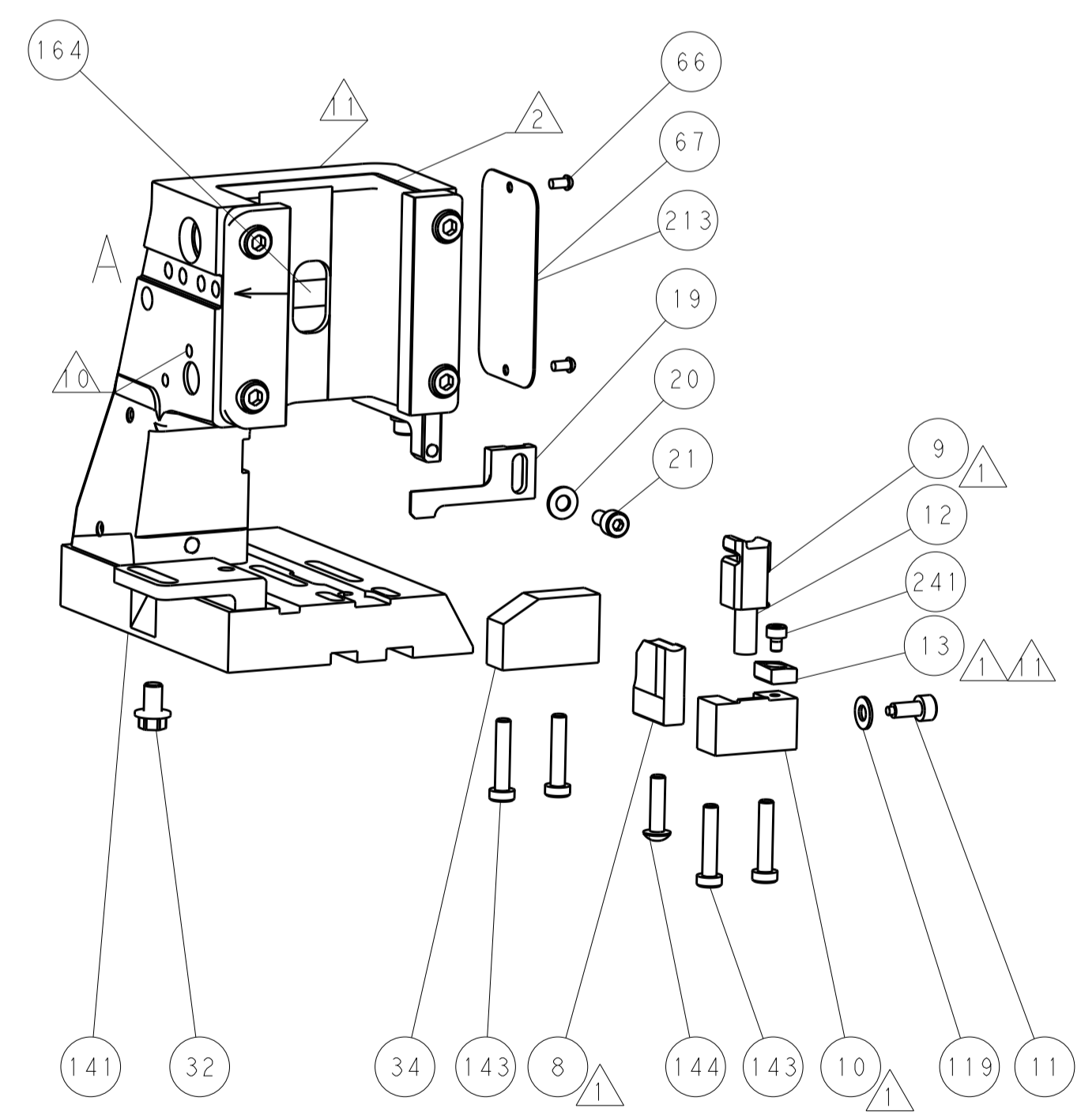
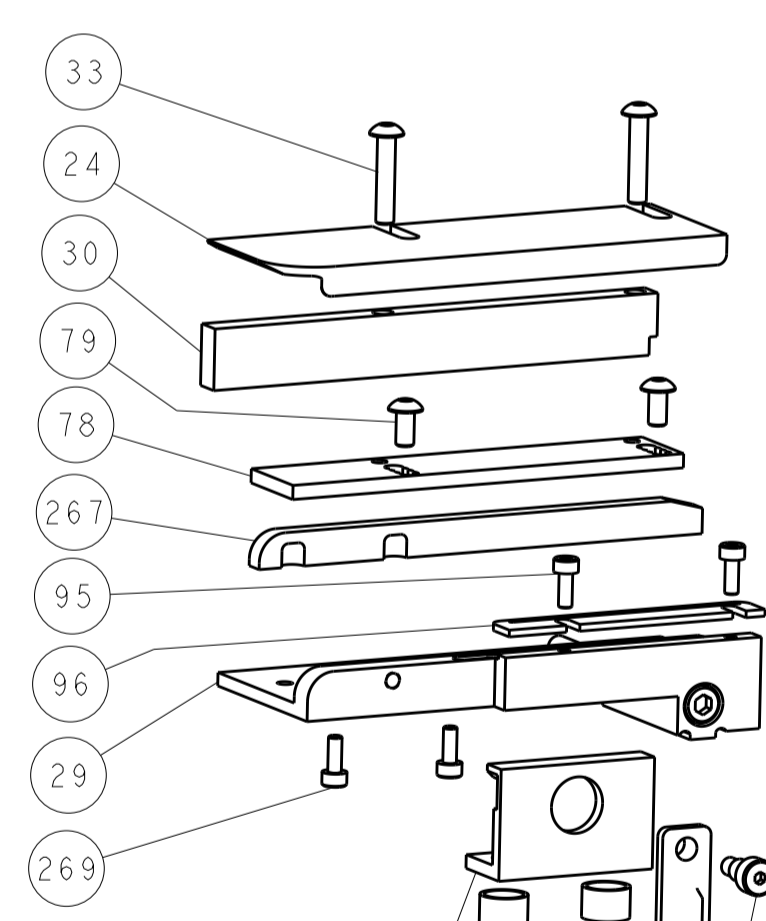
CAM POSITION



AIR FEED



TERMINAL SUPPORT LOCATION



FEED TRACK POSITION
GUIDE BY WIRE BARREL

PACIFIC VERSION
 Shown on sheets 3 of 4 & 4 of 4
 (Atlantic version shown on sheets 1 of 4 & 2 of 4)

DIMENSIONS:		TOLERANCES UNLESS OTHERWISE SPECIFIED:		DWN T. ELBIN 15JAN2014		REV D. STOUGH 15JAN2014		NAME Ocean Side Feed Applicator	
mm	0 PLC ±0.5 1 PLC ±0.5 2 PLC ±0.13 3 PLC ±0.013 4 PLC ±0.001	±	±	APVD	APVD	SIZE	CAGE CODE	DRAWING NO	RESTRICTED TO
	FINISH			WEIGHT	WEIGHT	A1	00779	©=2266189	
MATERIAL				Customer Accessible Production Drawing		SCALE	SHEET	OF	REV
						1:2	4	4	A