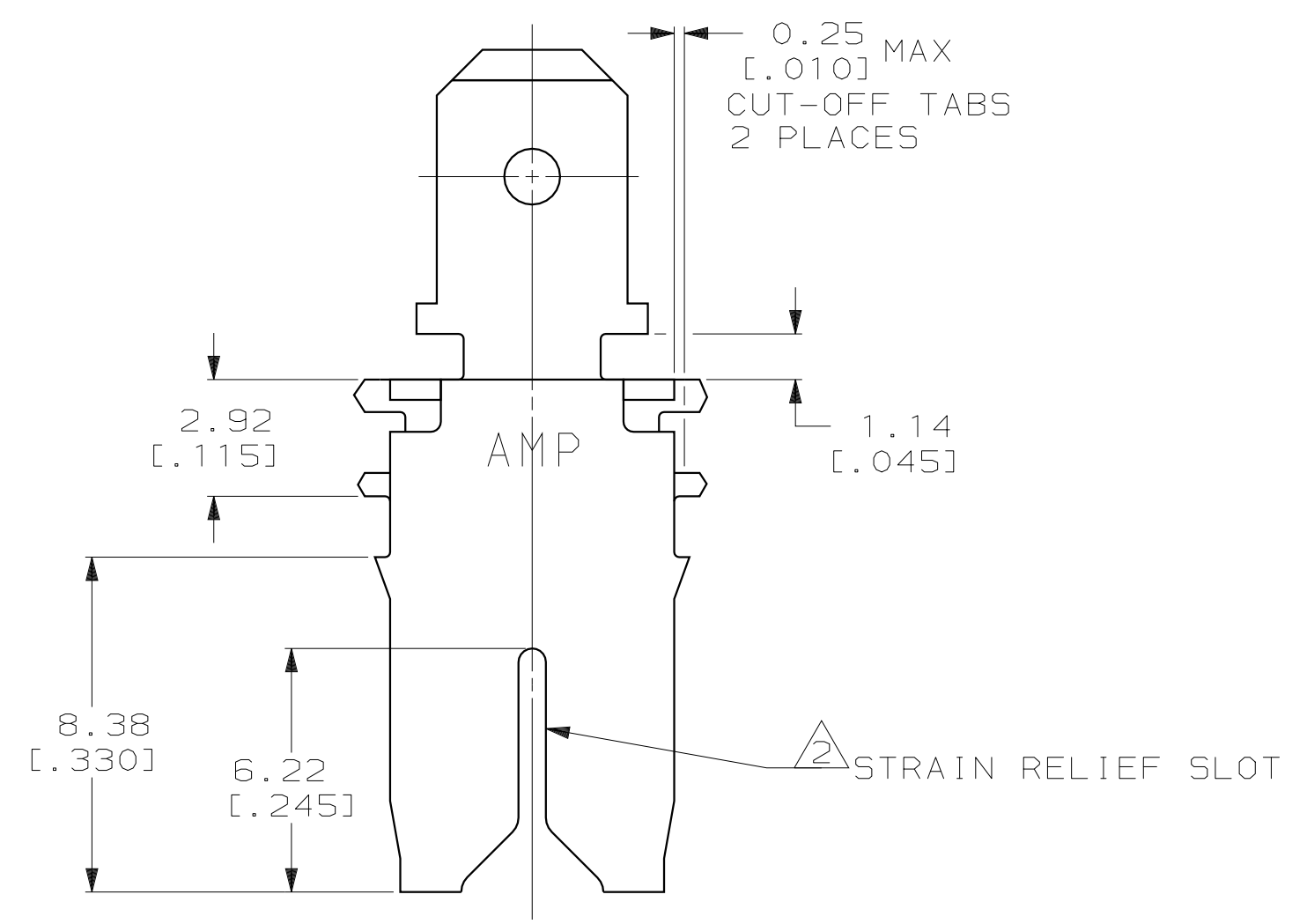
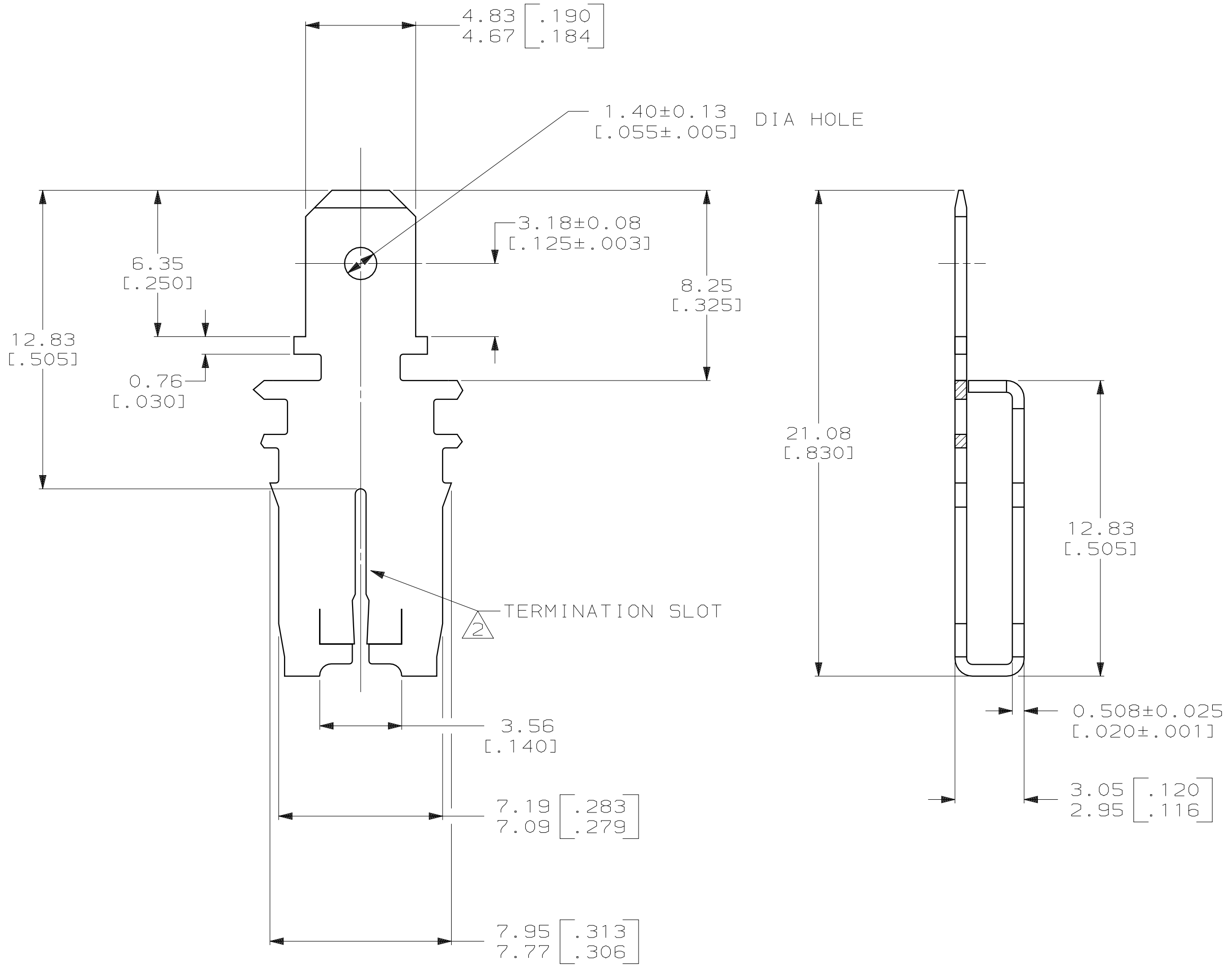
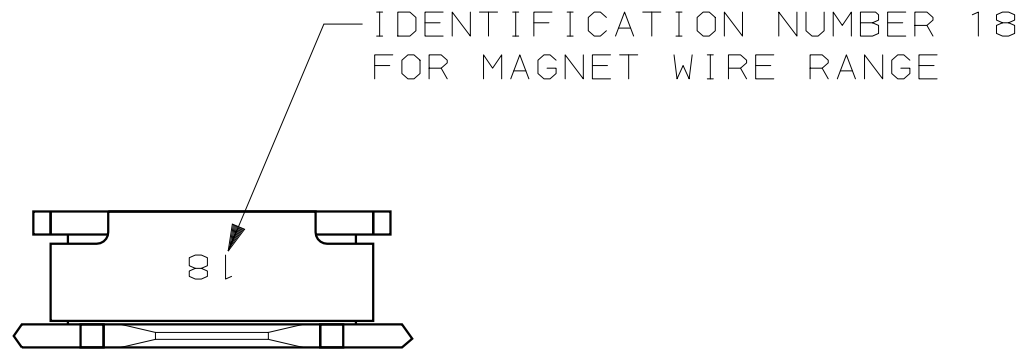


THIS DRAWING IS UNPUBLISHED. RELEASED FOR PUBLICATION
 BY AMP INCORPORATED. ALL RIGHTS RESERVED.

LOC		DIST		REVISIONS			
P	LTR	DESCRIPTION		DATE	DWN	APVD	
C		REV PER 0L10-0373-97		10SEP97	RG	NN	

- CONTINUOUS STRIP ON REELS WITH TERMINALS LOCATED ON 8.38±0.08 [.330±.003] CENTERS.
- SLOT TERMINATES EITHER A SINGLE OR DOUBLE MAGNET WIRE OF THE SAME SIZE AND TYPE. COPPER RANGE: 0.64-0.81mm [#22-#20] AWG.
- AFTER INSERTION INTO PLASTIC HOLDER, TAB PORTION MUST BE BENT OVER 45° TO 90° OR POTTED-IN TO PREVENT PULL-OUT WHEN MATING RECEPTACLE IS DISCONNECTED.
- THIS DRAWING IS RESTRICTED TO G.S. ELECTRIC



PROPOSED DESIGN
 NOT RELEASED FOR
 PRODUCTION

63983-1
 PART NUMBER

THIS DRAWING IS A CONTROLLED DOCUMENT.		DWN 09APR97 MICHAEL S. FEHER	AMP Incorporated Harrisburg, PA 17105-3608	
DIMENSIONS: mm [INCHES]		CHK 09APR97 RICHARD GRZYBOWSKI	AMP	
TOLERANCES UNLESS OTHERWISE SPECIFIED:		APVD 09APR97 NELSON E. NEFF	TAB, 4.75 [.187] FASTON,™ MAG-MATE™	
0 PLC ±-	1 PLC ±-	PRODUCT SPEC	108-2053	
2 PLC ±0.25 [.010]	3 PLC ±-	APPLICATION SPEC	114-2066	
4 PLC ±-	ANGLES ±-	WEIGHT	-	
MATERIAL 4M BRASS	FINISH 0.002032 [.000080] MIN TIN PER MIL-T-10727	CUSTOMER DRAWING	A2 00779 C-63983	
		SCALE 6:1	SHEET 1 OF 1 REV C	